

The image shows a clothing store interior with two racks of sweaters. The left rack holds a variety of sweaters in colors like white, green, brown, and beige, some with intricate patterns. The right rack features sweaters in neutral tones like cream, tan, and dark grey. Warm, yellowish lighting from above creates a cozy atmosphere, with some light reflecting off the sweaters. A semi-transparent dark grey box is overlaid on the left side of the image, containing the text.

In-Store Wi-Fi

Wi-Fi & Footfall Analytics



Customer Satisfaction

Everyone wants to stay connected to Wi-Fi.

Our system gives you a reliable, family friendly network that guests love.

From the data your Wi-Fi network collects you can market to customers and understand footfall and buying behaviour.



Cover Your Venues

The network is easily scaled to any size venue - from shopping malls to independent retail stores.

There is no limit to the number of access points you can install or venues you can cover, making it perfect for managing stores around the globe.



Professional Network Solution



The system monitors your Wi-Fi network 24/7.

We can make changes and deal with issues remotely - reducing downtime and support visits to your stores.

Your team will never have to deal with complaints about slow or unreliable Wi-Fi again.



Safe & Secure



There is one network (SSID) for guests and one for internal systems like your tills, music sound system and office computers.

Your internal network is separate so customers cannot access confidential information or hack your systems.

You can even give priority to internal networks to ensure your tills always run at full capacity when bandwidth is low.

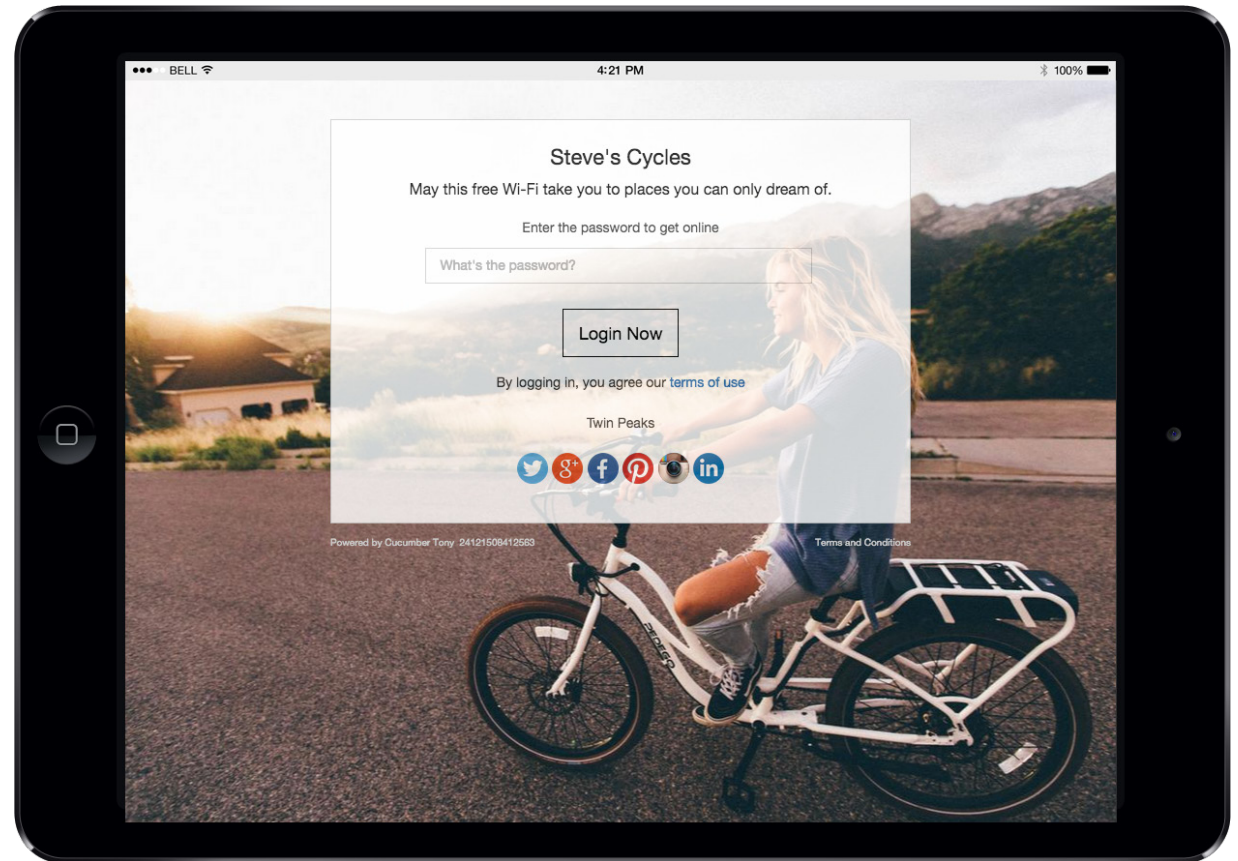


Advertise Your Brand



Your guest network includes a splash page branded to your business.

Use these pages to advertise deals and promotions. You can display different information depending on when and where the user is in the store.



Guest Access Options



There's everything from registration pages to social media logins.



Paid Access

Take online payments direct to your Paypal account.



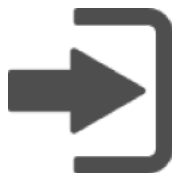
Vouchers

Unique codes for one off usage.



Password

You are emailed a new password daily, weekly or monthly.



Clickthrough

Securely connect in one single click.



Registration

Create a registration form to capture user details .



Social Logins

Guests login using their social media profile.

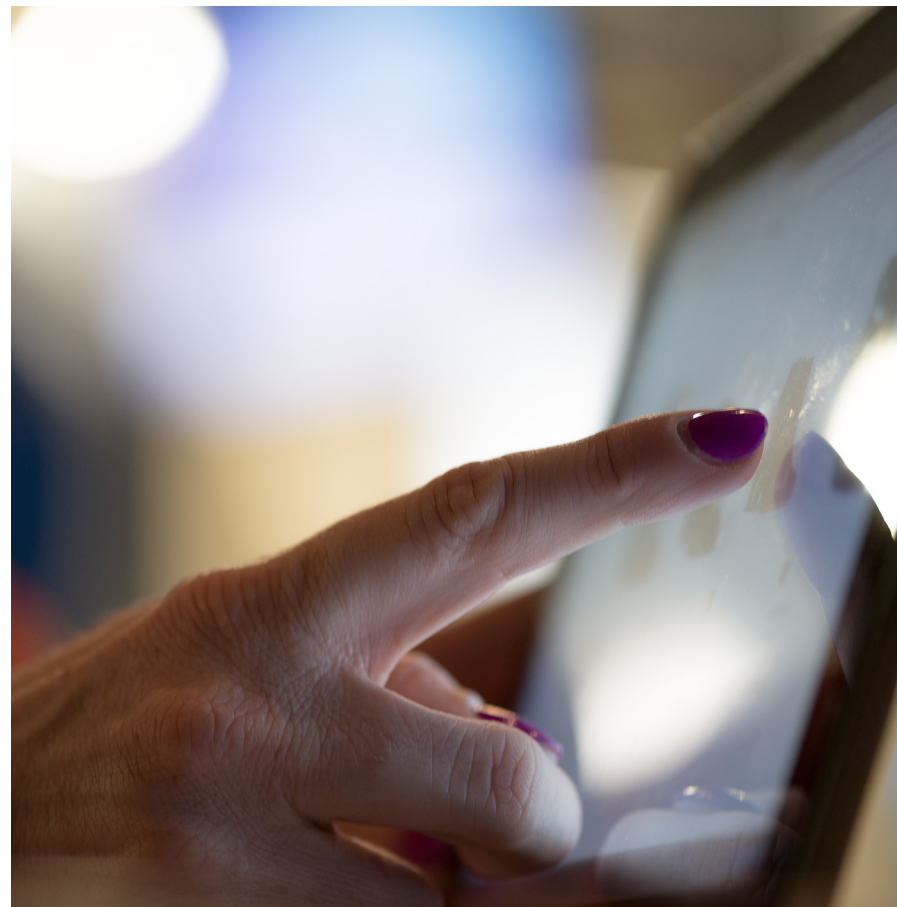
Capture Email Addresses



Capture user data and email addresses as people connect.

You can set up a simple email field or a full registration page specifying the data you'd like to collect, like name, age and gender.

Our system integrates with your email platform so you can email people automatically.

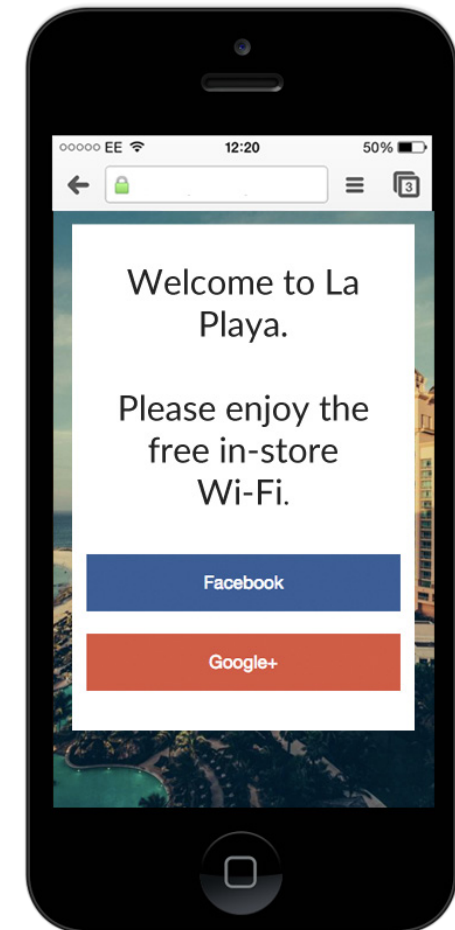


Social Wi-Fi



A social login helps you capture extra data.

- Guests log in with their social media account
- Redirect guests to your social media pages
- Promote Checkins at your Facebook venue
- Collect data on social profiles



“After we installed a hotspot we saw Facebook likes rise by over 50% in one month”

Legally Compliant



The guest SSID includes a captive portal which stores user download history for over 12 months.

This manages the risk to your business from improper use by customers. If someone was to do something illegal there would be a secure log of this activity.

You can even blacklist users downloading inappropriate material.



Content Filtering, Time Limits & Bandwidth Management



You can tailor your guest network to suit your business by adding a few restrictions.

Select the content filtering level to suit your cliental.

Allocate a time limit per user. You can vary this throughout the day to accomodate rush hours.

Bandwidth management lets you deliver faster speeds to more users.

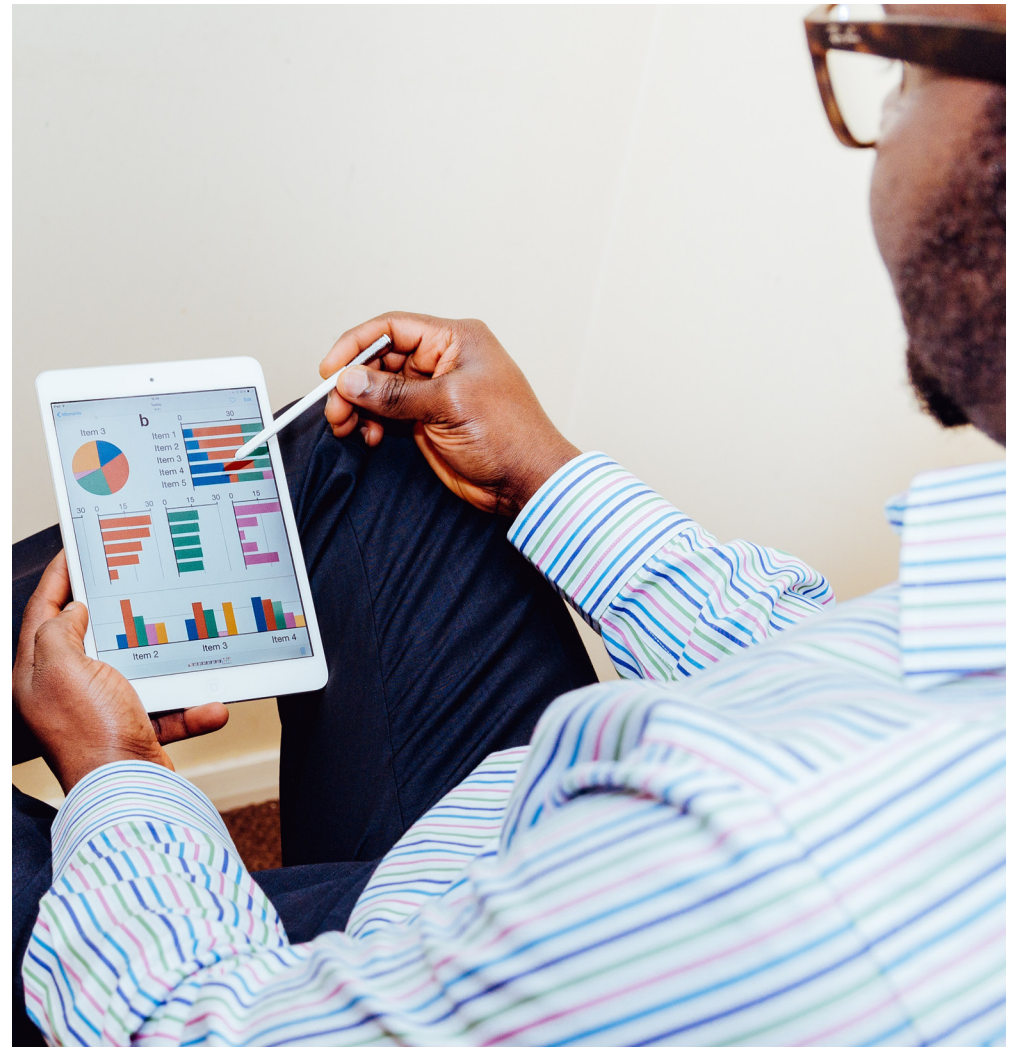
Monitor and control the speed of the guest connection depending on how much bandwidth you have available.

Set limits and prioritise different kinds of traffic. Email over video for example.

User Profiling



You can collect data like names, emails, social media profiles, gender and more to help with marketing campaigns.





As well as collecting user data our platform helps you understand how visitors engage with your store.

- Dwell time - compare how long people spend in store
- Live footfall - view the number of people in your venue at any time
- Missed traffic - people passing by your store vs. visitors in-store
- Maps - routes walked around your venue including entry and exit points
- Returning visitors - compare returning visitors across different stores
- Open API - use the API to compare this data with your sales systems



Integrate With Your Systems

Our platform is the first Wi-Fi platform with a fully featured public RESTful API.

Letting you integrate with PoS machines, discount apps and specialist marketing tools.

Boxes / Box Object / Display a box

GET <https://api.polkaspots.com/api/v1/boxes/id>

Response

200

Content-Type: application/json

```
01 {
02   "slug": "YZJ6exYhemVwr0figb-x1w",
03   "created_at": 1404910675,
04   "device_icon": "ubiquiti-unifi-ap-pro-icon.png",
05   "uptime": " 11:34:04 up 12:57,  load average: 0.13, 0.11, 0.14, 46648.23",
06   "location_id": 590,
07   "gmaps_zoom": 17,
08   "last_heartbeat": 1425209644,
09   "description": "Polkaspots Office BOX 2",
10   "calledstationid": "xx-xx-3C-02-37-67",
11   "wan_ip": "10.0.1.250",
12   "wan_proto": "dhcp",
13   "public_ip": "33.33.199.193",
14   "dns_hostname": "33-33-199-193.static.ps.net",
15   "state": "online",
16   "installer_id": 4,
```


Features Checklist



Cloud based web interface



Integrates with your network



Real-time activity logs



White label branding



Usage reports & emails



Captive portal logs



Social Wi-Fi



Unlimited scalability



Management zones

